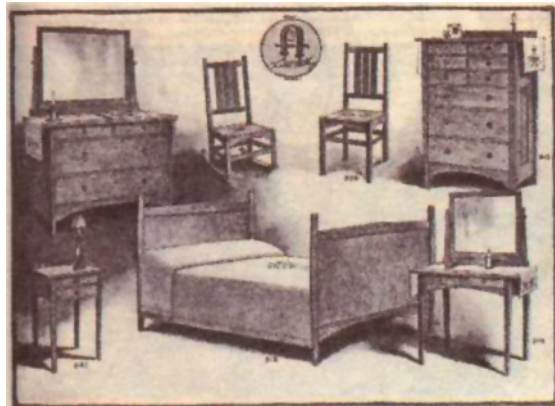




Portland craftsman Brent Willets of The Handwerk Shop created a king-size reproduction of the Stickley bed. Textiles are by textile artist and historian Dianne Ayres. The paintings by Southwestern artist R.C. Gorman are favorites of owner Jessica Greenway's that predate her interest in Arts and Crafts design.



One of the plates published by Gustav Stickley for use by retailers, circa 1907, shows Harvey Ellis-designed bedroom-suite furniture. All of these pieces (except the bed) are now in Greenway and Nelson's bedroom.

AT A TYPICAL HOME on a suburban cul-de-sac, all the surprises are inside. Two avid collectors who love living in Kirkland have turned their contemporary house into a showcase of early-20th-century Arts and Crafts furniture, pottery, metal work and leather designs.

This wasn't the vision Ken Nelson and Jessica Greenway started with a decade ago when they picked a house plan and a lot, built their home and watched the neighborhood grow around them. They had had a common interest in antiques when they married, along with pieces in mid-19th-century American oak and

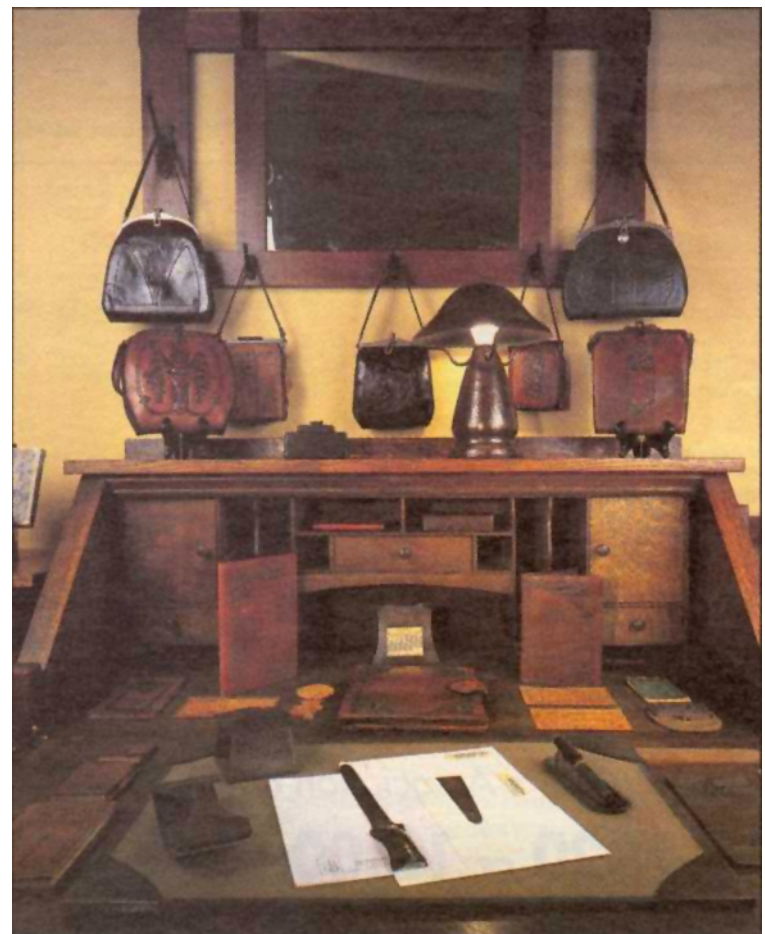
Eastlake styles. Then a few chance happenings led them to the Arts and Crafts movement.

Greenway, a financial planner, recalls her fascination with Frank Lloyd Wright when, on a business trip to New York City, she saw the living room of the Francis W. Little home reconstructed in the American Wing at the Metropolitan Museum of Art. She was amazed by the universal design concepts it represented, and the harmony and integrity of the space. She hadn't realized Wright also had designed furniture, carpets, glass and decorative accessories.

For Nelson, manager at a local Al-bertson's, appreciation for Arts

A Passion for Arts and Crafts

*After the bedroom suite
there was no turning back*



The L. and J. G. Stickley drop front desk displays Roycroft desk accessories (including an original blotter board) and some of the owners' leather handbag collection. The copper lamp is by Old Mission Copper Craft.