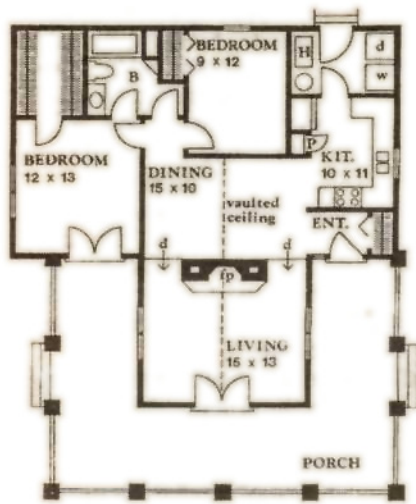


NORTHWEST LIVING



DESIGNED AND COPYRIGHT BY STEVEN DUARTE

*The Fenwick model. For a catalog:
Princeton Plans Press Houses,
P.O. Box 622, Princeton, NJ, 08540;
800-566-9655.*

chitects and builders, but he had never done any construction himself.

He called for help only on occasion. One friend assisted with foundation work, another friend helped with framing rafters. A mason in town did the eleven pillars and the fireplace, which accounted for \$17,000 of the total construction cost of \$90,000. Richard also contracted out plumbing, insulation and drywall. When he got high bids for electrical work, he decided to undertake it himself, with the exception of putting in the panel. And he did all the trim work, except the porch and balcony railings.

Even though they conceptually and philosophically wanted "small," as the house took shape, Diane's anxiety was how furniture would fit in such small rooms. The fireplace seemed immense, with nearly 10 tons of stone and a concrete pedestal and footings taking up what seemed to be the entire living room. For assurances, and to assist them in some of the interior-design decisions, they went to Karen Hovde of Interior Visions, a Port Townsend-based interior-design firm that specializes in Victorian, Edwardian and arts-and-crafts period design.

The style of the house and their browsing through books and magazines had led them to recognize arts-and-crafts aesthetics. Hovde helped the couple select door hardware, carpet, flooring, lighting and colors. Her choice of hickory flooring in the dining room, for example, harmonizes with the diverse woods in the house - fir, ➤

cedar, cherry, walnut and mahogany. Hovde and Mark Sabella of Niagara Woodworks designed the porch and loft railings.

Her expertise in arts-and-crafts really shows in the bedroom and bathroom, where she applied an evergreen-and-pine-cone-stenciled frieze designed by Helen Foster, tea-dyed fabric, sewed, stenciled and embroidered the shower curtain in the same pattern and turned an English arts-and-crafts-tiled washstand into the vanity and sink.

The evergreen-and-pine-cone friezes inspired boughs, garlands and tree decorations Hovde developed for the Brumenschenkels' first Christmas in their new home.

A florist before she pursued interior design, Hovde decks out many of Port Townsend's historic houses and bed-and-breakfast inns in season. "I do fresh arrangements with indigenous materials," she explains, showing off the tree in the living room. "These are all gathered from right here - fir, cedar, pine cones and salal, clam shells and scallop shells."

She made all the ornaments for the tree, including reproductions of Craftsman-era pine-cone decorations. She sprayed the salal

and clam shells with copper paint and glued copper ribbon to them for hanging. She also used dried statice. Shells gathered by Diane on the nearby beach became shades for lights. Flame amber lights were used for a softer look than typical clear ones. Hand-dipped white candles came from a local factory.

Hovde also did boughs and garlands for the entrance and interior. "The trick," she says, "is to pick just three or four different types - in this case, cedar, salal, fir and pine cones - and keep repeating them. The result is understated and handsome."

While the couple may build a guest cottage and a garage, for the time being, this compact home is all they need. And the nine-month process is still fresh in their memory.

"It was difficult to move in," Richard says. "This was where I went to work for 8 to 9 months. It took several weeks to feel like home." P

Lawrence Kreisman is author of six publications on regional architecture and historic preservation. He writes regularly for Pacific Northwest magazine. Greg Gilbert is a Seattle Times photographer.

